

Hey Mama!

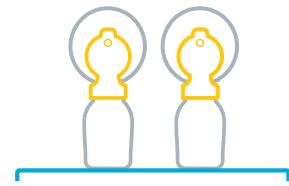
Here's How to Keep Your Room Clean



Once you enter, wipe down any hard surfaces including shelves, tables, seating, door knobs and light switch.



Unpack your bag and wipe down your pump, parts and accessories. Place items on one of the sanitized areas.



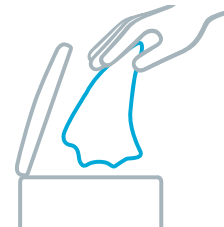
Pump as usual



Wipe down your pump, parts and accessories before packing them back in your bag.



Wipe down the hard surfaces again, including shelves, tables and seating.



Toss any garbage or wipes into the trash can.



Be sure to leave the room clean for the next mom. On your way out, use a wipe to clean the light switch and door knob one last time.



Toss that last wipe in a trash can outside the Lactation Space.